

# Utilisation of Flyash and Ggbs as A Fully Replacement of Cement in Geopolymer Concrete

V.Hariharan

Civil Engineering Dhirajlal Gandhi College of Technology Salem, India

G.Silambarasan

Civil Engineering Dhirajlal Gandhi College of Technology Salem, India

N.Harishkumar.

Civil Engineering Dhirajlal Gandhi College of Technology Salem, India

*Abstract— The major problem the world is facing today is the environmental pollution. Mainly in the construction industry the production of Portland cement causes the emission of pollutants that causes serious threat to the environment. The pollution effects on environment can be reduced by increasing the usage of industrial by-products in our construction industry. Geo-polymer concrete is such a one and in the present study, to produce the geopolymer concrete the Portland cement is fully replaced by fly ash and GGBS (Ground granulated blast furnace slag). The alkaline liquids are used for the activation of these materials. The alkaline liquids used in this study for the polymerization are the solutions of sodium hydroxide (NaOH) and sodium silicate ( $\text{Na}_2\text{SiO}_3$ ). Different molarities of sodium hydroxide solution i.e. 8 M & 12 M are considered to prepare geopolymer concrete mixes. Different combinations of fly ash and GGBS were used in this study such as 90% fly ash and 10% GGBS (F90 G10), 80% fly ash and 20% GGBS (F80 G20), 70% fly ash and 30% GGBS (F70 G30) and 60% fly ash and 40% GGBS (F60 G40). The geopolymer concrete prepared using the above combinations of fly ash and GGBS were tested for its compressive, split tensile and flexural strength. The geo-polymer concrete specimens were tested for their compressive strength at the age of 1, 3, 7, and 28 days and the split tensile & flexural strengths were evaluated at the age of 28 days. The result shows that the strength of geopolymer concrete is increasing with the increase of the molarity of sodium hydroxide. Also it was noted that with the increase in content of GGBS, the strength increases.*

**Key words** - Geo-polymer; GGBS; Fly ash; alkaline solutions; compressive strength

## INTRODUCTION

Nowadays, there is a big concern about the development of alternative materials to Portland cement concrete. The invention of geopolymer concrete provides an alternative solution for production of conventional concrete. Geopolymer concrete is environmental friendly and substantially reduces emissions of  $\text{CO}_2$ . The geopolymer concrete is manufactured by the activation of source materials using alkaline liquids. The industrial waste material

which has pozzolanic properties could be used as the source material. Fly ash and Ground Granulated Blast Furnace Slag (GGBS) are the general source materials used to produce the geopolymer concrete. To produce 1 ton of cement, about 1.6 tons of raw materials are required and the time taken to form the lime stone is much longer than the rate at which humans use it. On the other side the demand of concrete is increasing day by day for its ease of preparing and fabricating in all sorts of convenient shapes. So to overcome this problem, the concrete to be used should be environmental friendly. To produce environmental friendly concrete, we have to replace the cement with the industrial by products such as fly-ash, GGBS (Ground granulated blast furnace slag) etc.

In this respect, the new technology geo-polymer concrete is a promising technique.

## BASIC MATERIALS

Following are the basic materials used for the preparation of Geopolymer concrete:

a) Fly ash (source material), b) GGBS (source material) c) Aggregates (Coarse and Fine aggregate) d) Alkaline Activators, e) Water and f) Superplasticizer.

### 2.1 Fly ash

In the present experimental work, low calcium Class F fly ash is used and it is obtained from the Mettur thermal power station from Southern India.

### 2.2 Aggregates

Locally available clean river sand was used as fine aggregate in the study. The fineness modulus of the fine aggregate is 2.73 and the specific gravity is 2.67. The fine aggregate used conforms to Zone-II as per IS: 383-1970. The locally available crushed granite of maximum size 20 mm was used as the coarse aggregate. Specific gravity of coarse aggregate is 2.62.

### 2.3 Alkaline Solution

Sodium silicate and sodium hydroxide were used as activators to react with the aluminum and the silica in the fly ash and GGBS. Commercially available sodium silicate was used for this experimental work. Sodium hydroxide solution of 8 M and 12 M

concentration was prepared by dissolving sodium hydroxide flakes with 97% purity in the water. The ratio of sodium silicate to sodium hydroxide solution was fixed as 2.5. The alkaline solution was prepared by mixing both sodium silicate solution and sodium hydroxide solution together at least one day prior to use.

2.4 Water & Plasticizers

Distilled water is used for preparation of alkaline solution. To improve the workability of the fresh geopolymer concrete, high-performance super plasticizer (Conplast -SP 430) was used throughout the experimental work.

**MIXING AND CASTING OF GEOPOLYMER CONCRETE SPECIMENS**

3.1 Mixing

The solids constituents of the fly ash-based Geopolymer concrete, i.e., the aggregates, fly ash and GGBS were dry mixed manually for about 3 min. Then the alkaline solution mixed with super plasticizer is added to the dry mix. The mixing is continued for another 5 minutes. The fresh fly ash-based geopolymer concrete was dark in color with shiny appearance and the mixtures were usually cohesive.

3.2 Casting & Curing

The fresh concrete was cast into moulds immediately after mixing. The fresh concrete is cast into 100 x 100 x 100 mm cubes, 150 x 300 mm cylinders, and 100 x 100 x 500 mm prisms, to find the compressive strength, split tensile strength and flexural strength respectively. The specimens for compressive and flexural strength were prepared and tested in accordance with IS-516:1959. Test for split tensile strength was done as per the procedure laid down in IS 5816:1999. After casting, all the specimens were kept at room temperature till the date of testing.

**RESULTS AND DISCUSSION**

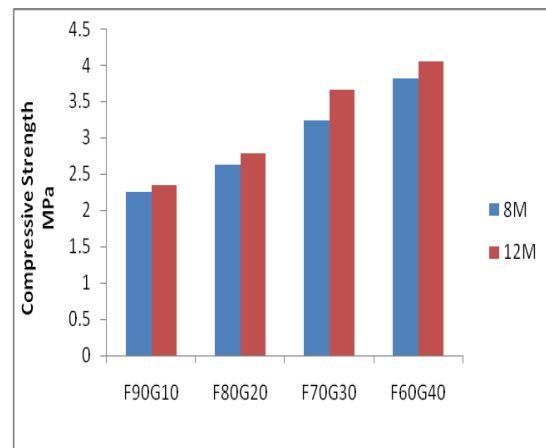
4.1 Compressive Strength

The compressive strength test results at different ages of concrete are given in Table 1. From the test results it was found that, the compressive strength increases when the age of concrete increases. Similarly as the molarity of NaOH is increased from 8 M to 12 M, the compressive strength also increases and the increase in compressive strength for F90G10, F80G20, F70G30, and F60G40 was about 25%, 8%, 8% and 21% respectively. For a molarity of 8M, specimens with 10% GGBS produces a compressive strength of 41.78 MPa whereas for the same molarity specimens with 40% GGBS produces a compressive strength of 67.07 MPa. Similarly For a molarity of 12 M, specimens with 10% GGBS produces a compressive strength of 51.88 MPa whereas for the same molarity specimens with 40% GGBS produces a compressive

strength of 80.73 MPa. This clearly reveals that as the content of GGBS increases, the compressive strength also increases.

**Table 1.** Compressive strength (MPa)

Mix ID	1 Day		3 Days		7 Days		28 Days	
	8M	12M	8M	12M	8M	12M	8 M	12 M
F90G10	3.80	4.89	15.15	15.53	24.20	24.13	41.78	51.88
F80G20	8.47	9.16	19.65	21.56	25.93	27.33	50.22	54.30
F70G30	13.83	15.60	35.51	36.07	35.28	37.07	63.78	67.07
F60G40	15.10	18.30	41.59	43.35	51.73	54.36	67.07	80.73



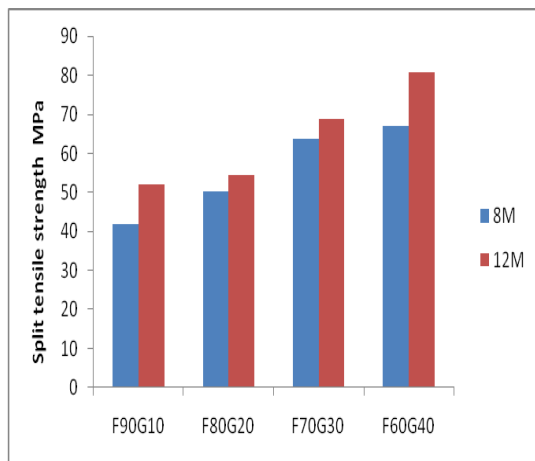
**Figure 1.** Effect of Concentration of NaOH on Compressive strength

4.2 Split Tensile Strength

The split tensile test was conducted using 150 X 300 mm cylindrical specimens according to IS: 516-1959 and the tests results are shown in Table 2. From the test results it was found that, strength increases when the concentration of NaOH increases. The maximum split tensile strengths are obtained for sodium hydroxide concentration of 12M and the increase in split tensile strength with respect to 8M specimens was about 5%, 6%, 14% and 7% respectively for F90G10, F80G20, F70G30, and F60G40. For a

Mix ID	28 Days Split Tensile Strength (MPa)						Average Split tensile strength (MPa)	
	8M			12M				
	1	2	3	1	2	3	8M	12 M
F90G10	2.20	2.25	2.30	2.46	2.23	2.376	2.25	2.35
F80G20	2.65	2.57	2.63	2.76	2.52	3.11	2.62	2.78
F70G30	3.05	3.50	3.15	3.70	3.79	3.50	3.23	3.66
F60G40	3.90	3.75	3.80	4.07	4.18	3.90	3.81	4.05

molarity of 8M, specimens with 10% GGBS produces a split tensile strength of 2.25 MPa whereas for the same molarity specimens with 40% GGBS produces a split tensile strength of 3.81 MPa. Similarly For a molarity of 12 M, specimens with 10% GGBS produces a split tensile strength of 2.35 MPa whereas for the same molarity specimens with 40% GGBS produces strength of 4.05 MPa. This clearly reveals that as the content of GGBS increases, the split tensile strength also increases.



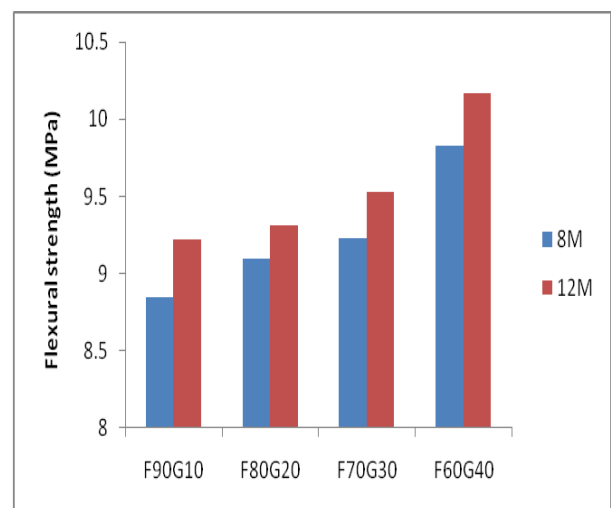
**Figure 2.** Effect of concentration of NaOH on Split tensile strength

#### 4.3 Flexural Strength

Tests were carried out on 100 X 100 X 500 mm prism specimens according to IS: 516-1959 and the tests results are shown in Table 3. From the test results it was found that, strength increases when the concentration of sodium hydroxide increases.

The maximum flexural strengths are obtained for sodium hydroxide concentration of 12M and the increase in flexural strength was about 5%, 3%, 3% and 4% respectively for F90G10, F80G20, F70G30, and F60G40 specimens as compared with specimens of 8M sodium hydroxide concentration. For a molarity of 8M, specimens with 10% GGBS produces a flexural strength of 8.86 MPa whereas for the same molarity specimens with 40% GGBS produces a flexural strength of 9.83 MPa. Similarly for a molarity of 12 M, specimens with 10% GGBS produces a flexural strength of 9.22 MPa whereas for the same molarity specimens with 40% GGBS produces a flexural strength of 10.17 MPa. This clearly reveals that as the content of GGBS increases, the flexural strength also increases.

Mix ID	28 days Flexural strength (MPa)						Average Flexural strength, (MPa)	
	8 M			12 M			8 M	12 M
	1	2	3	1	2	3		
F90G10	8.8	8.2	9.6	8.1	9.9	9.6	8.86	9.22
F80G20	9.0	8.6	9.6	8.9	9.1	9.0	9.06	9.31
F70G30	8.9	9.8	9.1	9.8	9.5	9.3	9.26	9.53
F60G40	10.1	9.8	9.7	10.0	10.4	9.75	9.83	10.17



**Figure 3.** Effect of concentration of NaOH on Flexural strength

## 5. CONCLUSIONS

From the experimental investigations carried out, the following conclusions were drawn:

1. The mechanical properties of geopolymer concrete such as compressive strength, flexural strength, split tensile strength increases with the increase in GGBS content
2. As the concentration of NaOH solution increases, the strength increases. The compressive strength of geopolymer concrete increases with an increase of age of concrete.
3. It is possible to produce a concrete of grade M80 using 40% GGBS and 60% fly ash.
4. By proper proportioning of GGBS and fly ash and by selecting appropriate parameters, desired strength of geopolymer concrete can be achieved.

**Acknowledgements:** The authors sincerely thank the Department of Science & Technology, New Delhi for providing financial support to carry out this research work.

## 6. REFERENCES

1. S Kumar , J Pradeepa and P M Ravindra (2013), Experimental investigation on optimal strength parameters of fly ash based geopolymer concrete, International Journal of Structural and Civil Engineering Research , Vol.2, No.2, pp.144-152.
2. P Ganapati Naidu , A S S N Prasad , S Adishesu and P V V satyanarayana (2012), A study on strength properties of geopolymer concrete with addition of GGBS , International Journal of Engineering Research and Development, Vol. 2, Issue 4, pp.19-28.
3. Low-calcium fly ash-based geopolymer concrete: long-term properties by s. e. wallah and b. v. rangan
4. Hariharan V. Vijai.k & Kumutha.R. Investigation on properties of geopolymer concrete using fly ash & ggbs"chemical science review and letters ,2014, 2(8), pp.620625.