

# Certain Investigations on Automatic Feeding of Domestic Pets

1<sup>st</sup> Ramya G , 2<sup>nd</sup> Keerthana V , 3<sup>rd</sup> Mahalakshmi M , 4<sup>th</sup> Mahalakshmi T A , 5<sup>th</sup> Maheshwari S , 6<sup>th</sup> Mariya pavitha L  
ECE , Jai shriram engineering college , Tirupur-638660

## Abstract

*Pet needs special treatment and special care. But due to Now-a-days busy life style, this special treatment and special care is not so simple. In other hand regular feeding to pets is most important thing. But sometimes pet owners often forget to feed their pets. Similarly, more and more pet owners and pet lover's feeds difficult to feed their pets at cater time. The goal of this work is to introduce, design and implement a smart pet system. As, how to raise pets in an easy way has been the main issue recently, this study examines the ability of computation, communication and control technologies to improve human interaction with pets. The objective is to allow pet owners to automate simple things, like monitoring, and feeding controls. Pet feeders are automated machines that dispense food at pre-set schedule. They are mainly time based and dispense a certain amount of food at specific time of the day. The pet feeder is a programmable system which is mainly controlled by a microcontroller.*

**Keywords:** *Microcontroller, Stepper motor, GSM module, IR sensor.*

## I. INTRODUCTION

The reason for this worth of effort may be on outline and actualize all the Automatic pet nourishing system". The term programmed pet nourishing framework may be An hot point Notwithstanding a days, particularly for those continuous advancements for innovation. Since the idea will be similar, Nonetheless the occupants need aid different. This may be to enhance their generally personal satisfaction for life, increment autonomy Also keep emergencies, pet holders requirement an approach will mechanize those transform of bolstering from claiming their pets. Today's reality from claiming attempting fathers and moms and the nature from claiming vocation assignments. That by prompt pets being unattainably for extended periods a day need raised a considerable measure of worries. This makes it important to search for elective approaches with handle those assignment for dealing with those pets. In this design, pet feedings are converted from An cardboard box under an intelligent media in general framework that incorporates imaginative innovation organization.

## II. LITERATURE SURVEY

### A. Programmable Pet Feeder

(Tesemma Gelila Berhan, Worku Toyiba Ahemed, Tessema Zelalem Birhan; 2014)

Pet feeders came into existence as more and more pet owners found it difficult to cater time to feed their pets. Pet feeders are automated machines that dispense food at pre-set schedule. They are mainly timed based and dispense a certain amount of food at specific time of the day. The pet feeder is a programmable system which is mainly controlled by a microcontroller. It consists of a LCD screen for input display, buzzer to alert pets for meals, stepper motor to control the speed and a turn table which is divided into different sections for placement of different food. Pet feeding can be difficult in this busy age but the perfect Pet feeder delivers a worry free solution to modern, caring pet-parents while away. There are many various types of automated pet feeding devices in the market now. Generally most pet feeders are commonly for cats and dogs but for a few special cases, some pet feeders for instances, like the fish pet-feeder or the hamster pet feeder are specifically designed to suit only for that particular type of pet due to their size and environmental living conditions.

### B. Simulation of Automatic Food Feeding System For Pet Animals

(Dharanidharan.J, Puviarasi.R: 2018)

An expanding number of ranches are depending on programmed nourishing to facilitate their workload, spare time and accomplish adaptability. The ranches reviewed were useful clients of programmed bolstering frameworks. There are different frameworks which allow the mechanization of nourishing frameworks.

At exhibit rail-guided bolster wagons are the best settled practically speaking, yet transport lines and self-pushed feeders are likewise utilized. The quantity of encourage segments utilized contrasted the same amount of as the time prerequisite. The working time estimations of the programmed bolstering frameworks (AFS) appear that by utilizing an AFS it is conceivable to spare time and accomplish more prominent adaptability. A huge

lessening in working time by correlation with a traditional bolster blender wagon, be that as it may, must be normal on account of sizeable groups. The working time necessity for programmed bolstering frameworks depends basically on the expulsion method, separate from the encourage store and sort of storehouse.

**BLOCK DIAGRAM**

In this, the block diagram contains the inbuilt components of the memory, I/O ports and serial communication. The external components are connected to the atmega 16 controller such as PIR sensor, stepper motor and GSM modules.

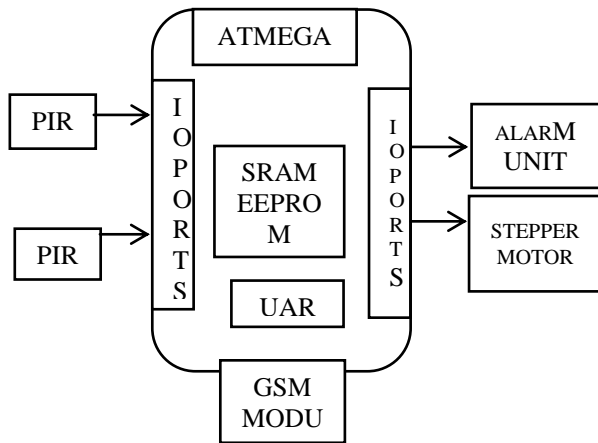


Figure 1

The architecture of the programmable pet agriculturalist can be burst bottom ward into 2 stages. The aboriginal date is the architecture of alone apparatus and the additional date involves interfacing the apparatus with the ambition of operating as one unit. During the architecture stage, the apparatus can be categorized as either accoutrements or software. The basal accoutrements apparatus abide of microcontroller, Sensor, GSM and motors. The basal software basic consists of a motor ascendancy algorithm and an adjournment timer algorithm. User will ascribe abstracts on the Sensor and the 40 pin microcontroller which is the academician of the pet agriculturalist will accomplish motor ascendancy and adjournment algorithms.

**III. HARDWARE SETUP**

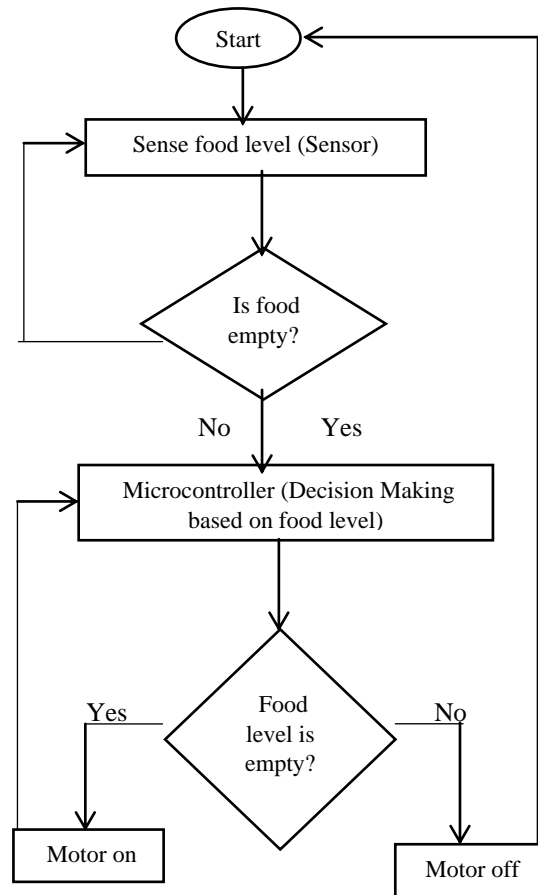


Figure 2

The flow chart explains the working of sensor and stepper motor by using microcontroller. IR sensor continuously monitors the food level in the bowl, when the food cross pre-set limit then IR sensor sends the signal to the microcontroller immediately. The microcontroller turn on the stepper motor at certain time, it runs from clockwise and anti-clockwise in 5sec delay operation.

**IV. RESULT AND DISCUSSION**

When our pet’s food comes under IR sensor, then the IR sensor sends is signal o microcontroller. Then the microcontrollers will immediately turn on. This process will continue until the IR level is over.

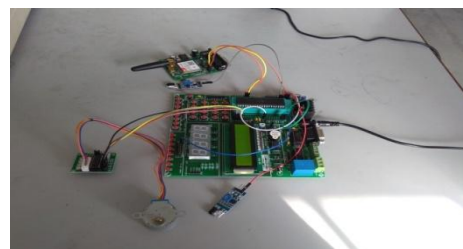
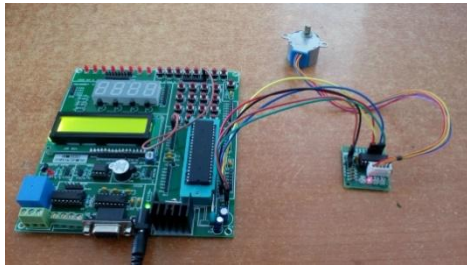


Figure 3

At the same time, the food in the box is exhausted and immediately sends predefines message to the

predefine number through GSM with the help of microcontroller.



**Figure 4**

### PRODUCT DISCRPTION

- Input voltage range 6V-36V DC.
- Working current = 100-140mA.
- Working temperature range is -20 -+55.
- Storage temperature range is -25 -+70.
- Send and receive SMS

### V. CONCLUSION

In this one task point by point demonstration of programmed pet feeder might have been examined. That one task holds both equipment and programming. The utilization of motors Also sensors demonstrates clear utilizations of basic units which could perform perplexing operations. Every last bit these straightforward units make those result exact cosset compelling. Utilization of inserted c makes it simpler Also client cordial.

### VI. FUTURE SCOPE

For future work, it will be expected on location the issue about force utilization of the pet feeder in this manner expanding its life period. Previously, addition, we likewise point on include propelled deficiency identification schemes coating every last one of utilized segments. Including a water holder with respect to highest priority on the feeder is another course also.

### VII.APPLICATION

This makes it simple to keep such a creature regardless of you experience issues nourishing. It will be used to naturally encourage our pet creature assuming that we try crazy. This system naturally conveys the sustenance’s of pets similar to canine What’s more feline. This technobabble is likewise utilized to POULTRY encircling Also fish. This procedure permits main little sum for housewives and pets.

### REFERENCES

[1] Allen Goldblatt, “Automatic feeder for marine mammals”, Laboratory for marine mammal Research University of Tel Aviv, 1992

[2] Bremer, R. “Auto Fish Feeder Feeds Fish Automatically”. 2014, October 14.

[3] K. Barrington. “History of Fish Keeping As A Hobby.” www.ratemymishtank.com. 2013, December 24.

[4] C.Chang,W. Fang, R-C Jao, C.Shyu, and I Liao. “Development of an intelligent feeding controller for indoor intensive culturing of eel”. *Aquacultural Engineering*, vol.32(2), 2005, pp.43–353.

[5] Ding Jie, Wang kecheng. A new Type Speed Regulator for a PWM Speed RegulatingSystem.Anshan Institute of science and technolgy, 2003.

[6] Francisco A.A, Vignaud G.A (2013). Using open-source platform for trajectory control of DC motors, IEEE.

[7] W Fang and C.M Chang. “Development of an automatic feeder with the capability of knowing when to stop feeding”. *Proceedings of the Annual International Conference and Exposition of the World Aquaculture society, Australia*, 26 April–2 May, 251, 1991.

[8] G.Stéphane, C.R. Philippe, F.Christian, D.M Benjamin and A.D David “Acoustical monitoring of fish density, behaviour, and growth rate in a tank”. *Aquaculture*, vol.251 (2), 2006, pp.314–323.

[9] John S., Ioannis K. (2010). Lab Kits Using the Arduino Prototyping Platform. 40th ASEE/ IEEE Frontiers in Education Conference.

[10] J.V Lee, J. L. Loo, Y. D. Chuah, , P. Y. Tang, Y.C Tan, & Goh. “The Use of Vision in a Sustainable Aquaculture Feeding System”. *Research Journal of Applied Sciences, Engineering and Technology*. Vol. 6(19): 2013, pp. 3658-3669.

[11] Mohd Nizam Bin Mohd Noor, Development and Prototyping an Automatic Fish Feeder, 2008978-1-5386-4606-9©2018 IEEE

[12] M.Z Noor, A.K Hussian, M.F.Saaid, M.S. Ali, & M Zolkapli. “The design and development of automatic fish feeder system using PIC microcontroller”. *IEEE Control and System Graduate Research Colloquium*. , 2012, pp. 343-347.

[13] M.N. Uddin, M Rashid, M. Mostafa, H. Belayet, S.Salam, N.Nithe, M. Rahman, & A.Aziz. “Development of Automatic Fish Feeder”. *Global Journal of Researches in Engineering: A Mechanical and Mechanics Engineering*. Vol.16 (2), 2016, pp. 14-24.

[14] M.Z.H.Noor,A.K. Hussain, M.F. Saaid, M.S.A.M.Ali, M.Zolkapli, The Design and Development of automatic Fish Feeder System Using PIC Microcontroller, 2012

[15] Patrick Henry G. Baniqued, Martin Joseph C. De Castro, Chael Triston T. Luzano, *Microcontroller Based Fish Feeder*, 2009

[16] Sabari Akilesh K, Savitha V, Vinithra N, Dhansekar J, “Smart Fish Feeder”, *InternationalJournal of Scientific Research in Computer Science, Engineering and Technology*,2017,111

[17] Song jian, Jiang Junsheng, Zhao wenliang. “The DC-motor PWM Speed regular system Base on Single Chip microcomputer”. *Study on Agricultural Mechanization*, 2006, 1(1)

[18] S.J. Yeoh ,F.S. Taip, J.Endan,R.A. Talib and M.K. Siti Mazlina, Development of Automatic Feeding Machine for Aqualculture Industry

[19] Seungcheon Kim, “Smart Pet Care System Using IOT”, *International Journal of Smart Home*, 2016.

[20] S. Yeoh, F.S Taip, J Endan, R.A. Talib and M.Siti. “Development of Automatic Feeding Machine for Aquaculture Industry”. *Pertanika J. Sci. & Technol*. Vol.18 (1), 2010, pp. 105 – 110.

[21] Tessema Gelila Berhan, Worku Toiba Ahemed, Tessema Zelalem Birhan, “Programmable Pet Feeder”, *International Journal of Scientific Engineering and Research (IJSER)*, 2015.

[22] A Yousef, S Steven, and L.Xiaoming. “Automatic Feeding Control for Dense Aquaculture Fish Tanks”. *IEEE Signal Processing Letters*, 2015, pp. 1-9.

[23] <http://www.nextag.com/automatic-dog-feeder/search-html> on 09 March 2016

[24] <http://en.wikipedia.org/wiki/Microcontrollers> on 2017.

[25] <http://www.perfectpetfeeder.com> Accessed on 20 Feb 2015