

# Spatial Relationship Based Approach for Detection of Hookworm

K.Divya

M.E Student (AE)

Erode Sengunthar Engineering College,  
Perundurai (TN)

Mr.J. Madhan mohan

Asst.Prof (Sr.G) / ECE

Erode Sengunthar Engineering College,  
Perundurai(TN)

**Abstract** -In this paper, human hookworm detection is based on spatial relationship between consecutive WCE image was proposed, aiming to reduce the number of image a clinician need to review. This method includes four stages they are preprocessing stage, tubular detection, feature extraction and classification stage. In preprocessing stage it includes noise reduction using guided filter and rgb to gray conversion. In second stage multi scale dual matched filter was used for tubular detection of hookworm and finally spatial classifier was proposed to classify wireless capsule endoscopy (WCE) images. The classification result will help to identify the presence of hookworm in WCE image. The accuracy value of the proposed method will be compared with existing method.

**Keyword:** Wireless Capsule Endoscopy, Hookworm detection, spatial classifier, tubular detection, matched filter.

## I. INTRODUCTION

Hookworm infection is widely distributed in Asia and Africa but can also found in other tropical and subtropical zones. The most common hookworm species are Aneylostoma duodenale and Nectator americanus. Symptoms of hookworm infestation include stomach pain, loss of appetite, nausea, diarrhea, constipation, bloody stool , gas, itchy skin, fever and fatigue. These organisms can survive as long as 10 years in their hosts. Prolonged infections can lead to serious symptoms such as iron deficiency because of the blood they drink. The infection can also lead to heart problems.

Respiratory symptoms such as a cough and wheeziness may develop when the larvae reach the lungs, a few weeks after exposure.

The wireless capsule endoscopy is a tool designed to allow for painless imaging of small intestine. It is equipped with a light source, camera, lens, radio transmitter and battery, that is propelled by the peristalsis along all gastro intestinal track, allowing full visualization of it from intestine without pain and sedation. WCE is considered as gold standard technique for diagnosis of intestinal bleeding, tumor, chronic abdominal pain etc.

Automatic hookworm detection is a challenging task due to poor quality of images, presence of extraneous matters, complex structure of GI, and diverse appearances in color and texture. Fig. 1 shows several representative WCE images having hookworms.

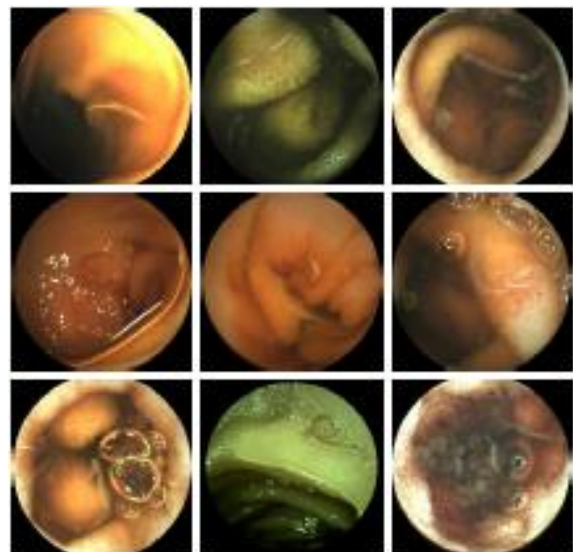


Fig.1.Examples of WCE images having hookworms and complex structure of GI

WCE images often suffer from noise and low visual quality because of complex

Circumstances in GI tract and poor illumination conditions and there are many other contents in GI tract, such as food, stool, bile and bubbles, which influence the detection of parasitizes. To tackle the above mentioned challenges, in this paper a novel automatic hookworm detection approach is proposed for WCE images.

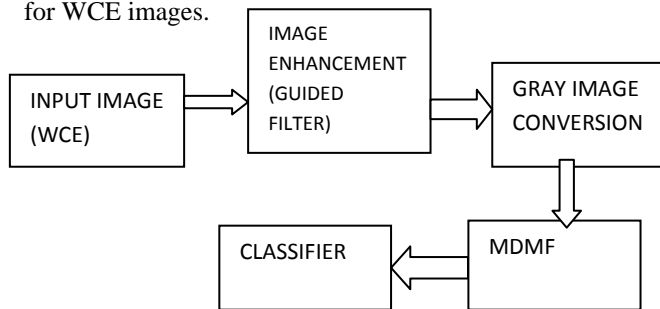


Fig 2. Block diagram of proposed system

The block diagram of the proposed system is shown in Fig 2. The input image is the WCE image. It is a gastrointestinal image which may contain hookworm, bubbles, small folds etc. The WCE images are usually dark and low contrast which may affect the performance of computer aided diagnosis system. In order to overcome this limitation guided filter is adopted for image enhancement. Then this WCE image is converted to gray image and then to binary image by changing the pixel values as “0” Black or “1” white.

**Guided filter kernel:** We first define a general linear translation-variant filtering process, which involves a guidance image I, an input image p, and output image q. Both I and p are given beforehand according to the application, and they can be identical. The filtering output at a pixel I is expressed as a weighted average

$$q_i = \sum_j w_{ij} (P) p_j$$

Where i and j are pixel indexes. The filter kernel  $w_{ij}$  is a function of the guidance image I and independent of p. This filter is linear with respect to p.

**II.MULTISCALE DUAL MATCHED FILTER**

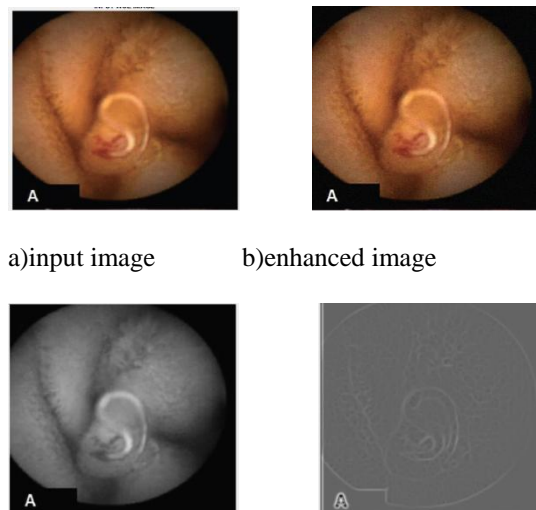
The multiscale dual matched filter (MDMF) is used to detect the tubular region in WCE images. In order to adapt to different orientations, the kernel has to be rotated to all possible orientations, and a set of filter banks is obtained. The implementation of the filters is done by multiplying 0° filter with a rotation matrix, which is defined as follows,

$$\begin{bmatrix} x' \\ y' \\ 1 \end{bmatrix} = \begin{bmatrix} \cos\theta & \sin\theta & tx \\ -\sin\theta & \cos\theta & ty \\ 0 & 0 & 1 \end{bmatrix} \times \begin{bmatrix} x \\ y \\ 1 \end{bmatrix}$$

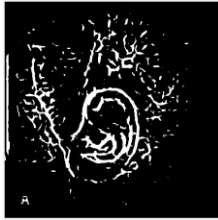
Where (x, y) is a point in the 0° filter. The point (x', y') is the rotated point around the pivot point (tx, ty) with degree  $\theta$ . Here, the pivot point (tx, ty) is set to coordinate origin (0, 0). The filter bank is normalized to zero mean after rotation

Let f(x,y) be the image and  $m_t(x,y)$  be matched filter at scale  $\sigma_i$ . The response at  $\sigma_i$  is expressed as

$$R_{i(x,y)} = m_t(x,y) * f(x,y) \text{ Where } * \text{ denotes the convolution operation.}$$



c)DMF (+)response d)DMF (-) response



e) MDMF response

### III. SPATIAL CLASSIFIER

Spatial information plays a fundamental role in the analysis and understanding of remotely sensed data sets. Common ways of incorporating spatial information into classification involve the use of textural, morphological, and object-based features. When regions are represented as sets of points (pixels), spatial relationships can be modeled in terms of directional and distance information between pixel groups. In particular, adjacency of two regions can be measured as a fuzzy function of the distance between their closest points or using morphological dilations modeling connectivity's. Distance-based relationships can also be defined using fuzzy membership functions modeling symbolic classes such as near and far using the distance between boundary pixels.

### IV. CONCLUSION

Computer aided detection of hookworm using WCE images is a challenging task. Different methods have been used to detect the hookworm. Although good performance was achieved 23% of hookworm images were not correctly detected. For the further improvement in this paper we have used spatial relationship based classification approach to boost the overall performance of the system. The ultimate goal is that automatic detection system can be used in a real condition to assist endoscopists, and can even obtain more accurate judgment than experienced endoscopist.

### REFERENCES

[1] Avci.D and Varol.A, "An expert diagnosis system for classification of human parasite eggs based on multiclass svm," (2009)Expert Systems with Applications, vol. 36,no. 1, pp. 43–48.

[2] Cortes.C and Vapnik.V, "Support-vector networks," *Mach. Learn.*,vol. 20, no. 3, pp. 273 C. A. B. Castañon, FragaJ.S, Fernandez.S, Gruber.A, and L. da F. Costa, "Biological shape characterization for automatic image recognition and diagnosis of protozoan parasites of the genus *Eimeria*,"*Pattern Recognit.*, vol.40, pp. 1899–1910, Jul. 2007

[3]Cui.L, Hu.C, Zou.Y, and Meng.M.H, "Bleeding detection in wireless capsule endoscopy images by support vector classifier," in Information and Automation (ICIA), International Conference on. IEEE, 2010, pp. 1746–1751.

[4]Dogantekin.E, Yilmaz.M, Dogantekin.A, Avci.E, and Sengur.A, "A robust technique based on invariant moments ANFIS for recognition of human parasite eggs in microscopic images," (2008)*Expert Syst. Appl.*, vol. 35, no. 3, pp. 728–738.

[5] Figueiredo .P, Almeida .N, Lerias .C " Effect of portal hypertension in the small bowel" An endoscopic approach. *Dig. Dis. Sci.* 2008

[6]Fu.Y, Zhang.W, Mandal.M, and Meng.M.H, "Computer-aided bleeding detection in wce video," Biomedical and Health Informatics,IEEE Journal of, vol. 18, no. 2, pp. 636–642, 2014.

[7] HadiR.S, khalidin.Z, Zehaida.M, "Human parasite worm detection using image processing technique" (ISCATE 2012), Dec 3, kotakinabalu, Malaysia.

[8]Hashemi.S, Kiani.S, Noroozi.N and Moghaddam.M.E, "An image contrast enhancement method based on genetic algorithm", (2010) Pattern Recognition Letters, vol. 31, no. 13, pp. 1816-1824

[9]Honghan Chen, Junzhou Chen \_, Qiang Peng, Ganglu Sun ., and Tao Gan y., "Automatic Hookworm Image Detection for Wireless Capsule Endoscopy Using Hybrid Color Gradient and Contourlet Transform," 2013 6th International Conference on Biomedical Engineering and Informatics (BMEI)

[10] Iakovidis.D.K, Koulaouzidis.A, "Software for enhanced video capsule endoscopy challenges for essential progress", 2015 Nature Reviews Gastroenterology & Hepatology

[11]Iddan.G, Meron.G, Glukhovsky.A, and Swain.P, (2000)"Wireless capsule endoscopy," Nature, vol. 405, p. 417,

[12]Kamarul .H. Ghazali1, Raafat S. Hadi1 & Zeehaida Mohamed2 "Automated System for Diagnosis Intestinal Parasites by Computerized Image Analysis" (2013) Modern Applied Science; Vol. 7, No. 5

[13] Li.Z.,Gong,H., Zhang, w. "A robust and automatic method for human parasite egg recognition in microscopic images".parasiteol .oct 2015,vol 114 , issue 10, pp3807-3813.

[14] Nora Jobai , Sheeja Augustin "Automatic Segmentation and Classification of Human Intestinal Parasites using Image Processing," July – 2014 International Journal of Engineering Research & Technology (IJERT) Vol. 3 Issue 7

[15]Romano Ngui<sup>1</sup>, Yvonne A. L. Lim<sup>1</sup>, Kek Heng Chua<sup>2\*</sup> “ Rapid Detection and Identification of Human Hookworm Infections through High Resolution Melting(HRM) Analysis” July 2012 , Volume 7 , Issue 7

[16]Seiffert.C, Khoshgoftaar T.M, Van Hulse.J, and Napolitano.A,(2010) “Rusboost: A hybrid approach to alleviating class imbalance,” Systems, Man and Cybernetics, Part A: Systems and Humans, IEEE Transactions on, vol. 40, no. 1, pp. 185–197